

ByciGolf™

INSTALLATION INSTRUCTIONS

UNIVERSAL BICYCLE GOLF BAG CARRIER

2022 Edition



INCLUDED IN THIS GUIDE



Assembly recommendations

List of components

Figures and instructions

ASSEMBLY RECOMMENDATIONS

You can use screws or tightening knobs to fasten the different components.

For parts assembly, we recommend the use of a wrench which allow you to control the tension more easily.

When tightening the different components, on a scale of 0 to 10, it is preferable to have a tension of 6. This will make it easier for you to make adjustments throughout the installation.



LIST OF COMPONENTS

- | | | | |
|-----------|---|-----------|---------------------------|
| 1 | BYCIGOLF RACK | 7 | square tube connector |
| 2A | upper part of the Bycigolf golf bag carrier | 8 | 1/4 screw x 2 |
| 2B | lower part of the Bycigolf golf bag carrier | 9 | 1 1/2 screw x 1 |
| 3 | 2 support struts | 10 | 1 1/4 screw x 8 |
| 4 | 2 female attachments to the rack | 11 | 1/4 tightening knobs x 11 |
| 5 | 2 male attachments to the rack | 12 | 1/2 tightening knobs x 2 |
| 6 | 2 saddle linking brackets | | |



Figure 1A

Assemble support struts with low tension.



Figure 1B

Attach the support struts to the rack.

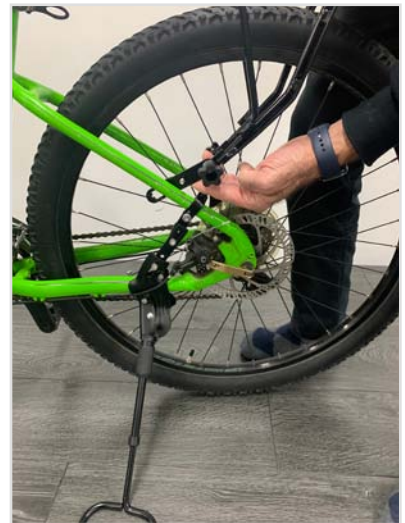


Figure 2A

Fasten one support strut with a small amount of tension.

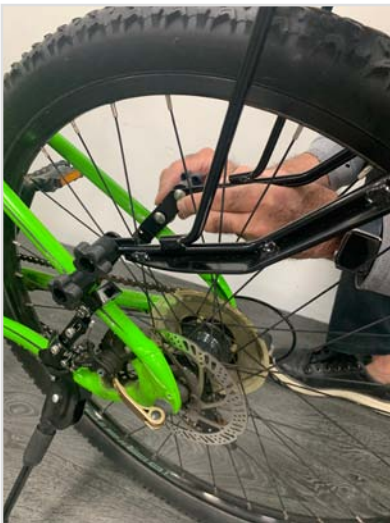


Figure 2B

Attach the other support strut in the same way as the previous one.



Figure 2C

Align the two sides so that they are level.

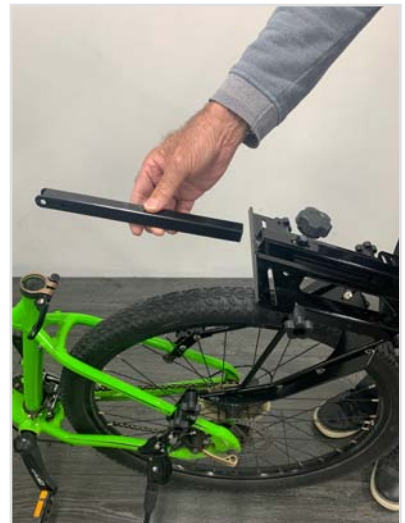


Figure 3

Remove the bike saddle and insert the square tube connector into the hole located on the front of the rack.



Figure 4A

Attach the first saddle linking bracket.



Figure 4B

Attach the second saddle linking bracket.



Figure 5

Attach the saddle linking brackets to the square tube connector of the rack.



Figure 6A

Insert the upper part of the golf bag carrier into the rear hole of the rack.



Figure 6B

Insert the lower part into the upper part of the golf bag carrier. Now tighten all the knobs that had a tension of 6 or less to a tension of 10.



Figure 7

The ideal position of the golf clubs should be above the axle of the bicycle. To help you achieve this position you can also adjust the golf bag carrier.



Figure 8

Install your golf bag on the golf bag carrier. Leveling the rack's position ensures better balance of the bike while preventing it from tipping backwards due to imbalance.

HOW TO REACH US



BYCIGOLF

4295, Boul. St-Elzéar Ouest
Laval, Québec, H7P 4J3

SPECIAL ORDERS

Tel: +1 450-987-1957

BYCIGOLF.CA